



LAHORE GRAMMAR SCHOOL 55-MAIN GULBERG
Mock Examination

Name Of Student: _____

Class and Section: **II IGCSE**

Global Perspectives

0457/12

Paper I

March 2020

Insert and Question Paper

1 Hour 15 Minutes

No Additional Materials are required.

READ THESE INSTRUCTIONS FIRST

READ THESE INSTRUCTIONS FIRST

Write your Centre number, candidate number and name in the spaces provided.

Write in dark blue or black pen.

Do not use staples, paper clips, glue or correction fluid.

DO NOT WRITE IN ANY BARCODES.

Answer all questions in the space provided. If additional space is required, you should use the lined pages at the end of the booklet. The question number(s) must be clearly shown.

Dictionaries are not permitted.

The Reading Insert contains the reading passages for use with all questions on the Question Paper.

The Insert is not assessed by the Examiner.

The number of marks is given in brackets [] at the end of each question or part question.

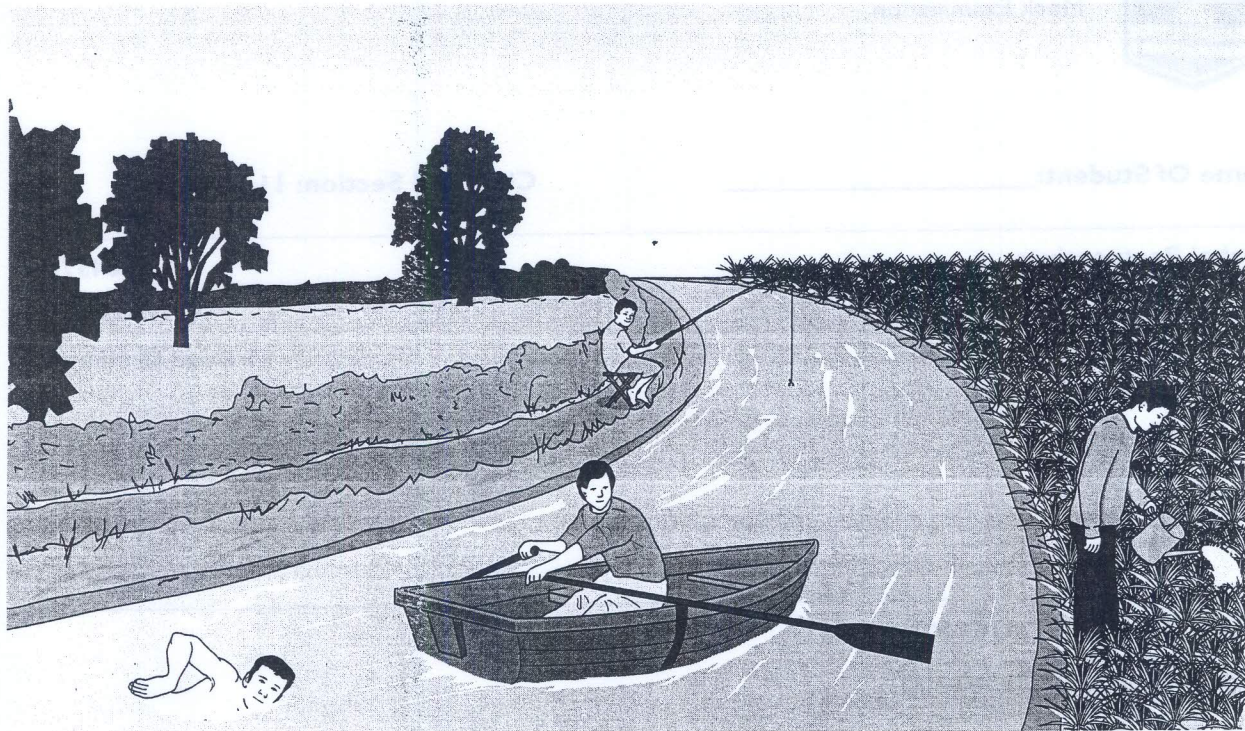


LAHORE GRAMMAR SCHOOL
55-Main Gulberg

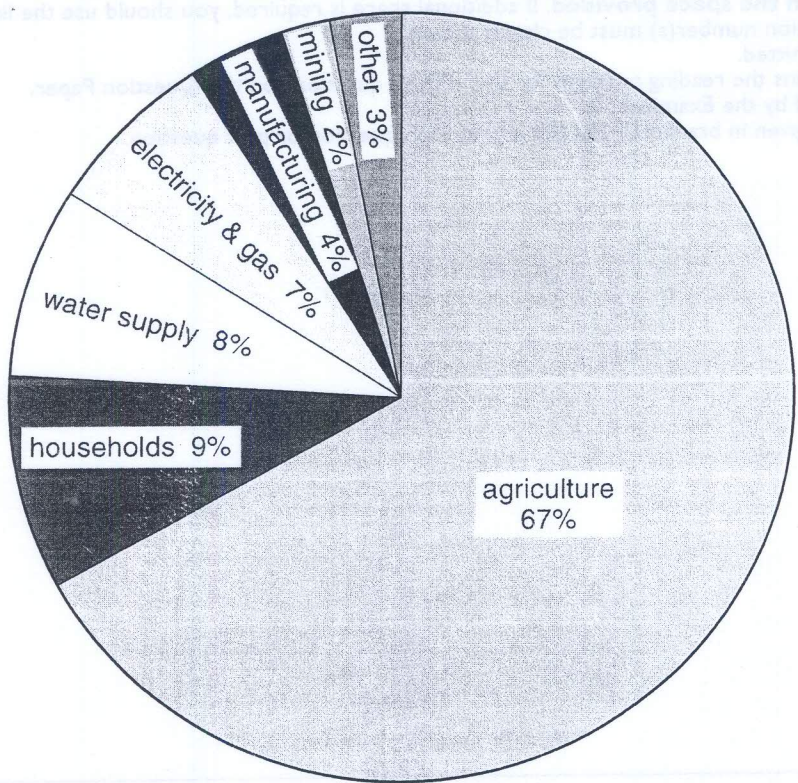
[Turn over

Source 1

Uses of water

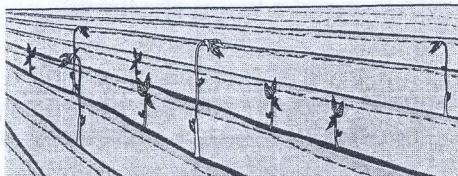


Worldwide uses of water in 2005

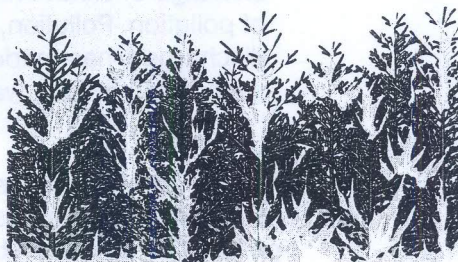


Source 2

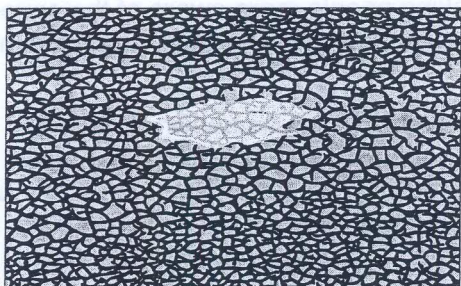
Consequences of a water shortage



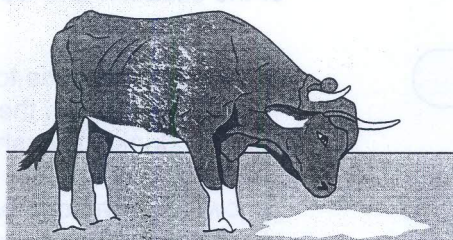
failed crops



forest fires



cracked reservoirs



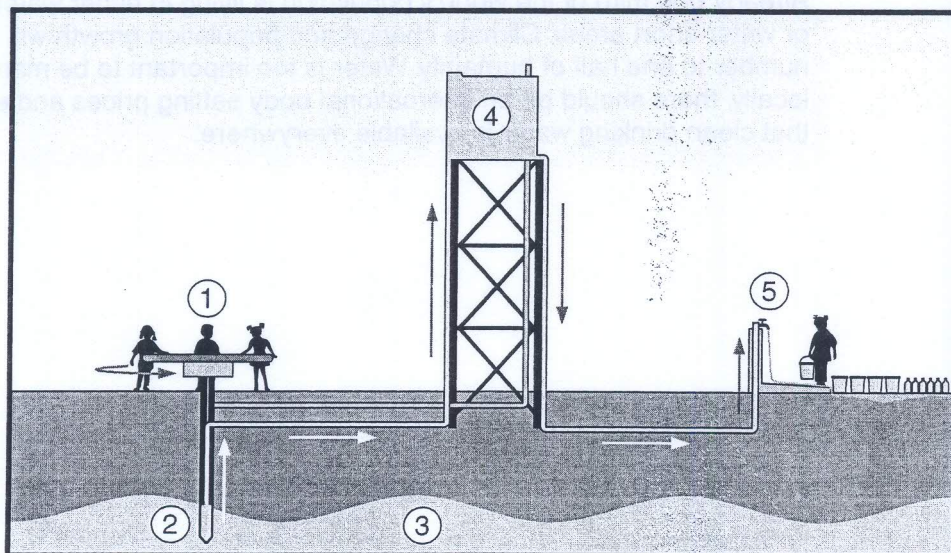
animals drink from a dirty puddle

Source 3

The PlayPump – how it works

While children have fun spinning on the PlayPump (1), water is pumped (2) from underground (3) into a tank (4).

A simple tap (5) makes it easy to get water.



Source 4: a blog discussing water shortages.

Jakob

The main problem we face is not so much a shortage of water but a shortage of clean drinking water and this is because of the amount of pollution. Pollution, mainly caused by sewage leaks and chemical discharges, has made clean water a rare and valuable resource. I believe we need to reduce water pollution to avoid a water shortage.

Heba

I totally agree, and one of the simplest ways of reducing water pollution is to use less water and so avoid unnecessary wastage. Less water will get polluted. Also, if everybody in the world had to pay for every litre of water they used then they would certainly use less and it might force them to think about how much they do use. It's because we assume that water is freely available and that it will never run out that we use as much as we do. By charging people, we are making people more aware of the seriousness of the situation and we might prevent a water shortage in our lifetime.

Natalia

My dad thinks I use too much water. He read somewhere that the average person in the developing world only has 10 litres of water every day for drinking, washing and cooking. I'm sure I don't use that much anyway, even though I live in the developed world – I always have a shower instead of a bath. Besides, there is plenty of water where I live so I don't see why we should pay as much or the same as people that live in areas where there is less water. Using less water in this country won't help countries where there is not enough water.

Samuel

The World Health Organization says that at any time, up to half of humanity has one of six main diseases associated with poor drinking water and inadequate sanitation. They reckon that about 5 million people die each year from poor drinking water, poor sanitation, or a dirty home environment, often resulting from water shortage. I think that the only way to clean water is by using advanced technology so it's only fair that the cost of this is passed on to customers.

Kwaku

Already one third of the world's population is living in either water-scarce, or water-short areas. Climate change and population growth will take this number to one half of humanity. Water is too important to be managed locally, there should be an international body setting prices and ensuring that clean drinking water is available everywhere.

Read the information in the accompanying Resource Booklet and answer **all** of Questions 1–4.

For
Examiner's
Use

1 Study Sources 1 and 2.

(a) Give **two** uses of water.

.....
.....[2]

(b) Which use of water do you think is most likely to contribute to a shortage of water? Why?

.....
.....
.....
.....
.....
.....[4]

(c) Give **two** consequences of a water shortage.

.....
.....[2]

(d) Which consequence of a water shortage do you think is most important? Why?

.....
.....
.....
.....
.....
.....[4]

2 Study Source 3. You are part of a community group. You need to make a decision about whether you should invest in the PlayPump. What additional information do you need and how will it help you to decide?

(a) One thing I need to know.

.....

.....

.....

How it will help me to decide whether we should invest in the PlayPump.

.....

.....

.....

.....

.....

[6]

(b) Another thing I need to know.

.....

.....

.....

How it will help me to decide whether we should invest in the PlayPump.

.....

.....

.....

.....

.....

[6]

3 Study Source 4.

For
Examiner's
Use

- (a) Identify **one** opinion in Jakob's blog post. Explain why you think it is an opinion.

.....

.....

.....

.....[3]

- (b) Natalia's dad 'read somewhere that the average person in the developing world only has 10 litres of water every day for drinking, washing and cooking.'

How reliable is this information? Explain your answer.

.....

.....

.....

.....[3]

(c) Whose reasoning works better, Heba's or Samuel's?

- the reliability of their knowledge claims;
- how reasonable their opinions are;
- the likeliness of any consequences they predict;
- whether you accept their values and why;
- any other relevant issues.

[12]

4 Do you think the water shortage problem is most likely to be resolved by global or individual action?

- state your conclusion;
- give reasons for your opinion;
- use relevant examples to support your opinion (you may use your own experience);
- show that you have considered different points of view;
- explain why you disagree with some of these points of view.

1850

1851

1852

1853

1854

1855

1856

1857

1858

1859

1860

1861

1862

1863

1864

1865

1866

1867

1868

1869

1870

1871

1872

1873

1874

1875

1876

1877

1878

1879

1880

1881

1882

1883

1884

1885

1886

1887

1888

1889

1890

1891

1892

1893

1894

1895

1896

1897

1898

1899

1900

1901

1902

1903

1904

1905

1906

1907

1908

1909

1910

1911

1912

1913

1914

1915

1916

1917

1918

1919

1920

1921

1922

1923

1924

1925

1926

1927

1928

1929

1930

1931

1932

1933

1934

1935

1936

1937

1938

1939

1940

1941

1942

1943

1944

1945

1946

1947

1948

1949

1950

1951

1952

1953

1954

1955

1956

1957

1958

1959

1960

1961

1962

1963

1964

1965

1966

1967

1968

1969

1970

1971

1972

1973

1974

1975

1976

1977

1978

1979

1980

1981

1982

1983

1984

1985

1986

1987

1988

1989

1990

1991

1992

1993

1994

1995

1996

1997

1998

1999

2000

2001

2002

2003

2004

2005

2006

2007

2008

2009

2010

2011

2012

2013

2014

2015

2016

2017

2018

2019

2020

2021

2022

2023

2024

2025

2026

2027

2028

2029

2030

2031

2032

2033

2034

2035

2036

2037

2038

2039

2040

2041

2042

2043

2044

2045

2046

2047

2048

2049

2050

2051

2052

2053

2054

2055

2056

2057

2058

2059

2060

2061

2062

2063

2064

2065

2066

2067

2068

2069

2070

2071

2072

2073

2074

2075

2076

2077

2078

2079

2080

2081

2082

2083

2084

2085

2086

2087

2088

2089

2090

2091

2092

2093

2094

2095

2096

2097

2098

2099

2100

2101

2102

2103

2104

2105

2106

2107

2108

2109

2110

2111

2112

2113

2114

2115

2116

2117

2118

2119

2120

2121

2122

2123

2124

2125

2126

2127

2128

2129

2130

2131

2132

2133

2134

2135

2136

2137

2138

2139

2140

2141

2142

2143

2144

2145

2146

2147

2148

2149

2150

2151

2152

2153

2154

2155

2156

2157

2158

2159

2160

2161

2162

2163

2164

2165

2166

2167

2168

2169

2170

2171

2172

2173

2174

2175

2176

2177

2178

2179

2180

2181

2182

2183

2184

2185

2186

2187

2188

2189

2190

2191

2192

2193

2194

2195

2196

2197

2198

2199

2200

2201

2202

2203

2204

2205

2206

2207

2208

2209

2210

2211

2212

2213

2214

2215

2216

2217

2218

2219

2220

2221

2222

2223

2224

2225

2226

2227

2228

2229

2230

2231

2232

2233

2234

2235

2236

2237

2238

2239

2240

2241

2242

2243

2244

2245

2246

2247

2248

2249

2250

2251

2252

2253

2254

2255

2256

2257

2258

2259

2260

2261

2262

2263

2264

2265

2266

2267

2268

2269

2270

2271

2272

2273

2274

2275

2276

2277

2278

2279

2280

2281

2282

2283

2284

2285

2286

2287

2288

2289

2290

2291

2292

2293

2294

2295

2296

2297

2298

2299

2300

2301

2302

2303

2304

